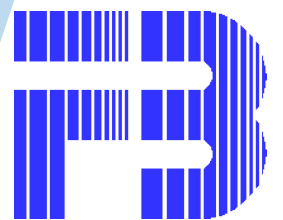


2021 CORPO- RATE PROFILE



To be happy.

We define it as ‘to meet improved yourself’.

Making a contribution to the regional community by our human resource management which devises the creating values.



President
Kenichi Takusari

We are based in Yamada-Machi which is famous for its beautiful scenery as a national park, and, manufacturing connectors which are used for electronic equipment such as mobile phones and personal computers.

Our business consists of design of mold and die, production of mold and die, injection of molding, press working and connector assembly. We are playing a part in the high-tech industry.

FB Co., Ltd. was established in 1975 and the company name expresses founder's philosophy of the high quality.

Holding up “respecting human dignity” as a company's principle, we are trying to achieve employees' happiness and to return profits to our community through the business activities.

Business Policy

To express deep gratitude, and to return profits

- to stockholders,
- to customers,
- to the community,
- and to employees.

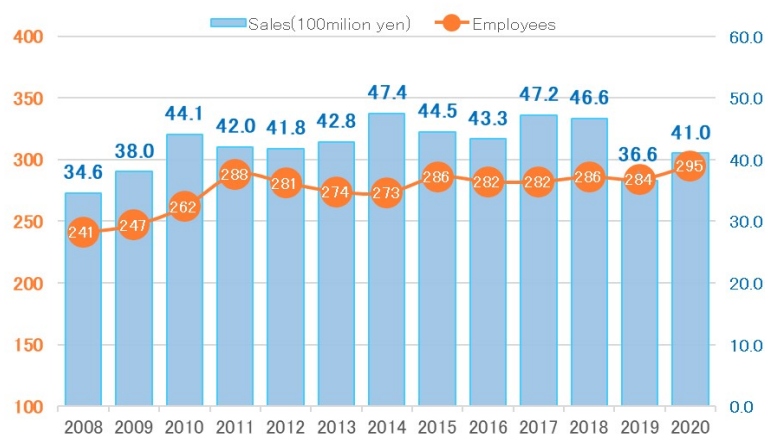
Business Details

We are manufacturing connectors which are used for electronic equipment such as mobile phones and personal computers.

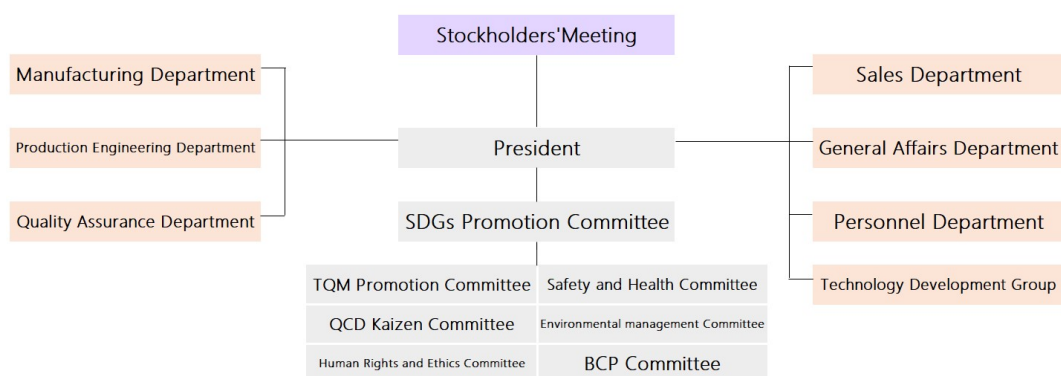
Connectors are one of the electronic components that send a current or data signals.

Besides the connectors, we are manufacturing mold and die, individual parts such as the actuators and the housings. Also, we are designing and producing the equipment for assembling.

Sales and The Number Of Employees



Organization Chart



Action for SDGs

The 2030 Agenda for Sustainable Development (the 2030 Agenda) is a set of international development goals from 2016 to 2030, which was adopted by the UN Sustainable Development Summit held in September 2015 building on the success of Millennium Development Goals (MDGs).

Contributions to SDGs through a committee

Safety and Health Committee	<ul style="list-style-type: none"> •Securing the safety of employees •Providing the sanitary environment 	
Environmental management Committee	<ul style="list-style-type: none"> •Giving an impulse to a global environment conservation 	
BCP Committee	<ul style="list-style-type: none"> •Preserving of the company and employees from emergency such as a natural disaster •Appropriately taking measures when an abnormality occurs 	
TQM Promotion Committee	<ul style="list-style-type: none"> •Securing the safety of employees •Providing the sanitary environment 	
QCD Kaizen Committee	<ul style="list-style-type: none"> •Optimizing producer capital •Improving the degree of satisfaction of customers 	
Human Rights and Ethics Committee	<ul style="list-style-type: none"> •Managing the risk for Human rights and corporate ethics •Improving morals for company organization employees 	
Mutual aid society	<ul style="list-style-type: none"> •Promoting that company benefits and Promoting friendship for employees 	

Basic Management Policy

- Secure reasonable profit through a concerted company-wide effort for a comprehensive quality assurance program.
- Produce products that customers are satisfied with by improving upon technologies held by each department for continued advancement of the company.
- Maintain healthy and vigorous lifestyles and refine intellect and humanitarianism, hence contributing to society.
- Search extensively for capable human resources and cultivate them as cornerstones for building long-term prosperity.

Quality Policy

We are producing products that are high quality, low cost, and short delivery based on “putting customer first” and aiming the customer trust us.

With the idea of 3 reality principle; problem solving method in Japan, we realize that we improve earlier by going to the place where the problem really has occurred, getting a real part and take it, and finding all available figures and data about our problems.

- Promote internal standardization for the whole company and establish structures for QC management by data.
- Proactively utilize methods of statistical control for all areas of company activities.
- Establish quality assurance structures for all manufacturing processes.
- Exert effort for cost reductions of each product by continual improvement of manufacturing systems.

We are implementing the following activities to achieve this quality policy.

1. Understand the needs and expectations of our customer or laws, rules and requirements from customer .Clarify our requirements when we produce products and keep providing products satisfied with them.
2. To achieve more appealing quality, we try to continually improve.
3. Set our quality goals and review them regularly.
4. Review continually our quality policy whether it is appropriate or not.

Environmental Policy

Basic Principle

We will contribute to the society through the technology for people and environment friendly.

Then we will try to preserve the global environment and leave the global which is easy to live for the future and rich society

1. Technology Development

We will try to develop the products, processes and systems those are environmentally friendly.

2. Preserving the global environment

We will comply with environment-related laws, regulations and promote prevention of pollution.

Moreover, we will estimate and evaluate the influence of the environment at each step such as the developing or the scrapping and we will try to preserve the global environment.

3. Contribute to our society

We will take part in the environmental protection activities around Miyako city and Shimohei area.

We will try to live in harmony with our society.

Action Guideline

1. Consider

We will positively try to the technical development which is environmentally friendly.

2. Value

We will efficiency use and recycle various kind of resources like materials and energy.

3. Participate

We will try to take part in and support the environmental protection activities and provide you with all the environmental information.

4. Comply

We will comply with environment-related laws and regulations. Also, we will try to make rules according to them.

5. Educate

We will provide in-company training on preservation of the environment and raise the awareness of, and support for employees.

6. Improve continually (Spiral Up)

We will set a goal and work at it based on our plan. Regularly, we will review and improve the activities continually.

Moreover, we will check our validity by having an audit.

7. Open to the public our environmental policy

Company Overview



Company Name	FB Co., Ltd.	Sales	4,100,000,000yen(2020)
President	Kenichi Takusari		3,660,000,000yen(2019)
Address	2-31-1, Toyomane, Yamada-machi, Shimohei-gun, Iwate		4,660,000,000yen(2018)
	028-1302 Japan		4,720,000,000yen(2017)
	286-2, Omoto Minaminakano, Iwaizumi Shimoheigun, Iwate		4,330,000,000yen(2016)
	027-0421 Japan		4,450,000,000yen(2015)
Date Established	April, 1975		4,740,000,000yen(2014)
Business Overview	Design of mold and die, Production of mold and die		4,320,000,000yen(2013)
	Injection molding, Press working, Connector assembly		4,280,000,000yen(2012)
Main Customer	Hirose Electric Co., Ltd.		4,200,000,000yen(2011)
	Tohoku Hirose Electric Co., Ltd.		4,410,000,000yen(2010)
	Koriyama Hirose Electric Co., Ltd.		
	Ichinoseki Hirose Electric Co., Ltd.	Number of Employees	301(Men:198/Women:103)
Capital	50,000,000yen		

2021.4.1

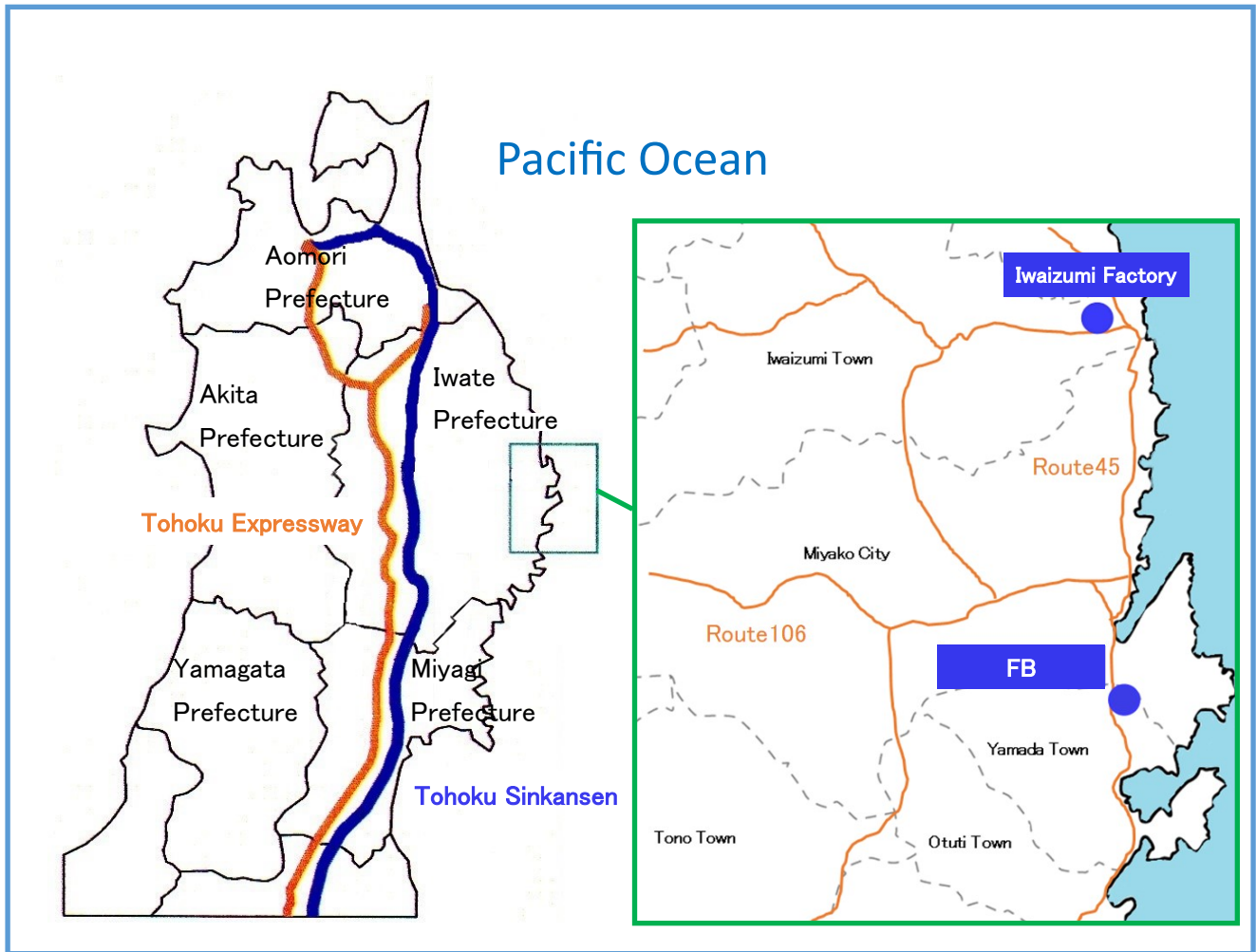
Machine Tools, Analytical and Measuring Instruments

Injection Molding Machine	NIIGATA ENGINEERING CO.,LTD.	MD50S-III	Die-sinker EDM	Sodick Co.,Ltd.	AP1L
	NIIGATA ENGINEERING CO.,LTD.	MD30S-II		Sodick Co.,Ltd.	AP3L
	NIIGATA ENGINEERING CO.,LTD.	MD30S-III		Mitsubishi Electric Corporation	SV8PM
	NIIGATA ENGINEERING CO.,LTD.	CND15L-A2		Sodick Co.,Ltd.	K1BL
	NISSEI PLASTIC INDUSTRIAL CO.,LTD.	HM7-CN2		ASTEC CO.,Ltd.	A33M/P3
	NISSEI PLASTIC INDUSTRIAL CO.,LTD.	N7/N7X-06A/06AN		Sodick Co.,Ltd.	AP200L
	NISSEI PLASTIC INDUSTRIAL CO.,LTD.	NPX7-1F		MAKINO MILLING MACHINE CO.,LTD.	UPN-01
	NISSEI PLASTIC INDUSTRIAL CO.,LTD.	NEX15III-2EG		AMADA MACHINE TOOLS CO.,LTD.	GLS-80PL
	NISSEI PLASTIC INDUSTRIAL CO.,LTD.	NEX50III-5EG		MAKINO MILLING MACHINE CO.,LTD.	KSJ-55
	NISSEI PLASTIC INDUSTRIAL CO.,LTD.	MD30S-II		NIKON CORPORATION	MM-40/3LT
	NISSEI PLASTIC INDUSTRIAL CO.,LTD.	MD30S-III		NIKON CORPORATION	MM-60/3LT
	NISSEI PLASTIC INDUSTRIAL CO.,LTD.	NEX110III-18E		NIKON CORPORATION	MM-400/LT
	NISSEI PLASTIC INDUSTRIAL CO.,LTD.	HMX7-CN2		NIKON CORPORATION	MM-800/LT
	FANAUC CORPORATION.	α-30C		NIKON CORPORATION	NEXIV VMR-3020
	Sodic Co.,Ltd.	TR40EH	Automatic Measurement Device	KEYENCE CORPORATION	IM-6140
Press Machine	YAMADA DOBBY Co.,Ltd.	NXT-40I		KEYENCE CORPORATION	IM-7020
	YAMADA DOBBY Co.,Ltd.	i-MX30		Shimadzu Corporation.	EDX-8000
	NIDEC-SHINPO CORPORATION.	ANEX-15H		Shimadzu Corporation.	HMV-1TADW
	NIDEC-SHINPO CORPORATION.	ANEX-60 II		AMETEK Inc.	Genesis APEX2
	NIDEC-SHINPO CORPORATION.	FENIX-40		KEYENCE CORPORATION	VHX-5000
Grinding Machine	NIDEC-SHINPO CORPORATION.	VX-40W		KEYENCE CORPORATION	VHX-6000
	OKAMOTO MACHINE TOOL WORKS,LTD.	PFG500C II		KEYENCE CORPORATION	VK-9700
	OKAMOTO MACHINE TOOL WORKS,LTD.	PSG64DX		KEYENCE CORPORATION	VW-9000
	OKAMOTO MACHINE TOOL WORKS,LTD.	HPG500		Shimadzu Corporation.	AG-1 KNX
	OKAMOTO MACHINE TOOL WORKS,LTD.	MEISTER			
Machining Center	ROKU-ROKU Co.,Ltd.	MEGA S500	Micro Hardness Tester		
	ROKU-ROKU Co.,Ltd.	ANDROID II type-S			
	ROKU-ROKU Co.,Ltd.	CEGAIII-542			
	MAKINO MILLING MACHINE CO.,LTD.	IQ300	EDX Spectroscopy		
			Digital Microscope		
			Laser Scanning MicroScopes		
			High Speed Micro scope		
			Tensile Testing Machine		

2021.4.1



Map



FB Co., Ltd.

2-31-1, Toyomane , Yamada-machi,

Shimohei-gun, Iwate 028-1302 Japan

TEL 81-193-86-3456 FAX 81-193-86-3457

URL <https://iwate-fb.jp/>



FB Co., Ltd. Iwaizumi Factory

286-2, Omoto Minaminakano,

Iwaizumi-cho Shimohei-gun, Iwate 027-0421 Japan

TEL 81-194-28-3400 FAX 81-194-28-3401



<https://iwate-fb.jp/>